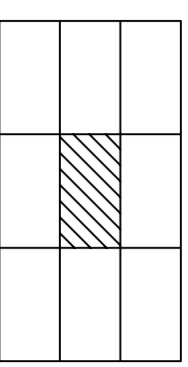


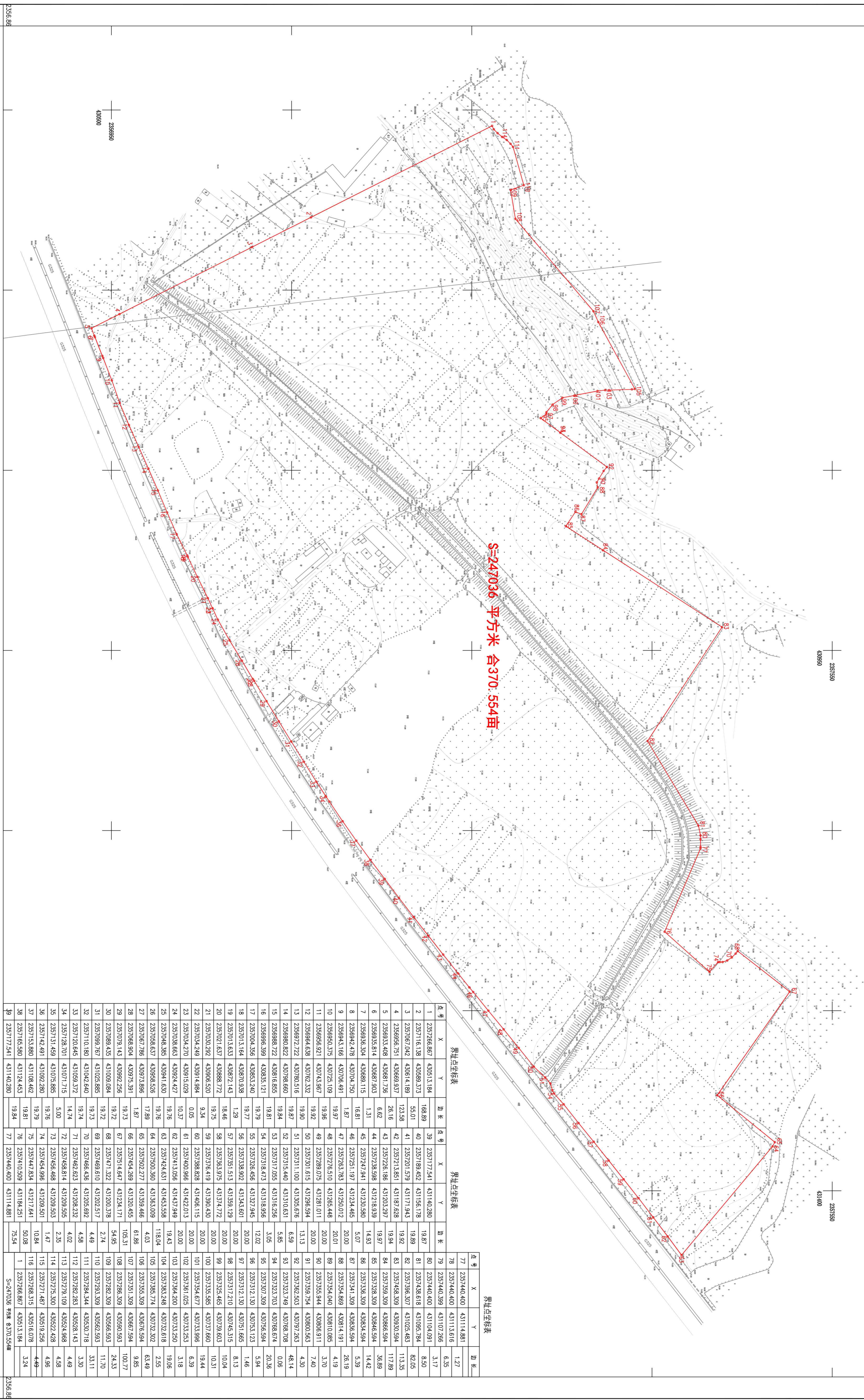
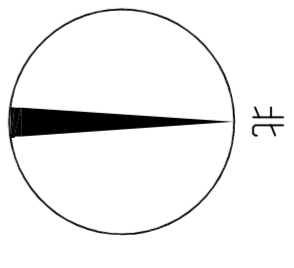
湛江市赤坎区都市工业园项目示意图

2356-9-430.4



430.43
2357.085

431.555
2357.085



S=247036 平方米 合370.554亩

界址点坐标表

点号	X	Y	边长	点号	X	Y	边长	点号	X	Y	边长
1	2357266.867	430513.184	168.89	39	2357177.541	43140.280	19.87	79	2357440.400	43114.881	1.27
2	2357116.138	430683.373	55.01	40	2357189.452	43156.728	19.89	80	2357440.400	43104.091	6.35
3	2357087.042	430644.189	123.58	41	2357201.578	43171.945	19.92	81	2357438.618	43109.784	8.50
4	2356954.751	430683.937	26.16	42	2357213.851	43187.628	19.94	82	2357396.307	43105.483	82.05
5	2356933.408	430881.736	6.62	43	2357226.188	43203.297	19.97	83	2357358.309	43093.594	117.89
6	2356935.814	430891.903	6.62	44	2357238.588	43218.939	19.97	84	2357329.329	43086.994	36.89
7	2356936.304	430888.115	1.31	45	2357247.941	43230.580	5.07	85	2357328.309	43084.994	14.42
8	2356942.478	43078.730	1.87	46	2357251.191	43234.465	20.00	86	2357328.309	43084.994	5.39
9	2356943.166	430706.491	19.97	47	2357263.783	43250.012	20.01	87	2357341.309	43086.994	26.19
10	2356950.375	430725.109	19.96	48	2357276.510	43265.448	20.00	88	2357354.689	43084.191	4.19
11	2356959.921	430743.967	19.92	49	2357289.075	43281.011	20.00	89	2357354.640	43080.085	3.70
12	2356964.638	430762.332	19.92	50	2357301.615	43296.594	13.13	90	2357355.544	43080.911	7.40
13	2356972.722	430780.516	19.87	51	2357311.100	43306.676	6.59	91	2357359.594	43080.583	4.30
14	2356980.822	430798.660	19.84	52	2357323.749	43310.631	5.85	92	2357362.503	43079.263	48.14
15	2356988.722	430816.855	19.81	53	2357337.055	43316.256	3.05	93	2357323.749	43078.708	0.06
16	2356995.399	430833.121	19.79	54	2357351.473	43318.956	12.02	94	2357323.703	43078.674	20.36
17	2357004.356	430853.240	19.77	55	2357326.468	43327.945	20.00	95	2357307.399	43076.994	5.94
18	2357013.164	430870.938	1.26	56	2357338.907	43334.601	20.00	96	2357312.130	43075.123	1.46
19	2357013.633	430872.143	18.46	57	2357351.513	43339.129	20.00	97	2357321.301	43075.665	8.13
20	2357021.637	430888.722	19.75	58	2357363.975	43347.772	20.00	98	2357317.210	43074.515	10.04
21	2357030.292	430905.520	9.34	59	2357376.419	43359.430	20.00	99	2357325.465	43073.603	10.31
22	2357034.249	430914.984	0.05	60	2357388.828	43368.115	20.00	100	2357335.586	43073.660	19.44
23	2357034.270	430915.029	19.75	61	2357400.966	43372.013	20.00	101	2357346.677	43073.253	6.39
24	2357038.653	430924.427	19.79	62	2357413.056	43373.949	19.43	102	2357361.025	43073.253	3.18
25	2357048.385	430941.630	19.76	63	2357426.631	43375.558	118.04	103	2357364.200	43073.256	2.55
26	2357058.637	430954.526	17.80	64	2357439.380	43376.009	4.03	104	2357363.248	43073.616	19.06
27	2357067.786	430973.886	1.87	65	2357452.277	43379.466	61.88	105	2357355.774	43072.307	63.49
28	2357068.904	430975.391	19.72	66	2357464.289	43380.455	4.03	106	2357355.309	43067.994	9.85
29	2357079.143	430992.256	19.72	67	2357476.647	43384.171	105.31	107	2357351.399	43067.994	4.86
30	2357088.435	431008.084	19.73	68	2357489.610	43392.517	4.49	108	2357328.309	43062.933	100.77
31	2357099.767	431025.885	19.73	69	2357469.610	43392.517	4.49	109	2357328.309	43062.933	24.33
32	2357110.180	431042.640	19.74	70	2357466.438	43395.692	4.58	110	2357328.243	43058.143	33.11
33	2357120.645	431059.372	14.74	71	2357462.623	43398.232	2.74	111	2357328.243	43058.143	3.30
34	2357128.701	431071.715	5.00	72	2357458.814	43399.305	2.35	112	2357319.109	43054.898	4.49
35	2357131.459	431075.885	19.76	73	2357456.468	43399.503	1.47	113	2357305.300	43052.428	4.96
36	2357142.491	431092.280	19.79	74	2357447.834	43391.641	10.84	114	2357271.487	43051.256	4.49
37	2357153.880	431108.462	19.81	75	2357441.834	43371.641	10.84	115	2357268.515	43051.679	3.24
38	2357165.880	431124.453	19.84	76	2357430.598	433184.251	75.54	116	2357268.515	43051.679	75.54
39	2357177.541	431140.280	19.84	77	2357440.400	43114.881	19.84	117	2357268.515	43051.679	75.54

界址点坐标表

点号	X	Y	边长
77	2357440.400	43114.881	1.27
78	2357440.400	43113.616	6.35
79	2357440.399	43107.266	3.17
80	2357440.400	43104.091	8.50
81	2357438.618	43109.784	82.05
82	2357396.307	43105.483	113.35
83	2357358.309	43093.594	117.89
84	2357329.329	43086.994	36.89
85	2357328.309	43084.994	14.42
86	2357328.309	43084.994	5.39
87	2357341.309	43086.994	26.19
88	2357354.689	43084.191	4.19
89	2357354.640	43080.085	3.70
90	2357355.544	43080.911	7.40
91	2357359.594	43080.583	4.30
92	2357362.503	43079.263	48.14
93	2357323.749	43078.708	0.06
94	2357323.703	43078.674	20.36
95	2357307.399	43076.994	5.94
96	2357312.130	43075.123	1.46
97	2357321.301	43075.665	8.13
98	2357317.210	43074.515	10.04
99	2357325.465	43073.603	10.31
100	2357335.586	43073.660	19.44
101	2357346.677	43073.253	6.39
102	2357361.025	43073.253	3.18
103	2357364.200	43073.256	2.55
104	2357363.248	43073.616	19.06
105	2357355.774	43072.307	63.49
106	2357355.309	43067.994	9.85
107	2357351.399	43067.994	4.86
108	2357328.309	43062.933	100.77
109	2357328.243	43058.143	33.11
110	2357328.243	43058.143	3.30
111	2357319.109	43054.898	4.49
112	2357305.300	43052.428	4.96
113	2357271.487	43051.256	4.49
114	2357268.515	43051.679	3.24
115	2357268.515	43051.679	75.54
116	2357268.515	43051.679	75.54

湛江市不动产登记规划测绘院

2016年7月数字化成果
2016年7月数字化成果
1:985国家坐标系
GB/T20257.1-2007年规范式

1:1500

编制人: 梁深杰
绘图人: 柯杰斯
检查人: 李家全

431.555